



Square fenders

SQUARE FENDERS



Square fenders are produced in various designs and sizes and they can be used for a wide range of purposes. The production takes place by means of extrusion. When compared to D- fenders, square fenders are used when a more rigid and stronger bumper is required for use in more severe conditions.

Types

Three standard types of square fenders are available:

- SC fender. Provided with an O-shaped inner chamber
- SD fender. Provided with a D-shaped inner chamber
- Solid Square fender. Without an inner chamber

FenderTec produces square fenders in a standard range and most common sizes are kept in stock and can be delivered at short notice. Customer specific sizes and designs can also be produced with short lead times.

Square fenders with a smaller dimension can be produced in very long lengths and in other colours (non-marking).

Processing

Square fenders can be mounted in several ways by means of bolts and/or strips. The mounting holes required are made through the side or through the top and bottom of the fender. The fenders are finished in accordance with your requirements and drawings. Square fenders can also

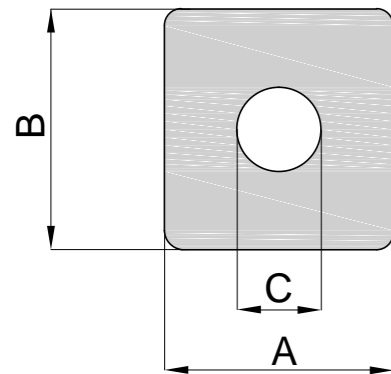
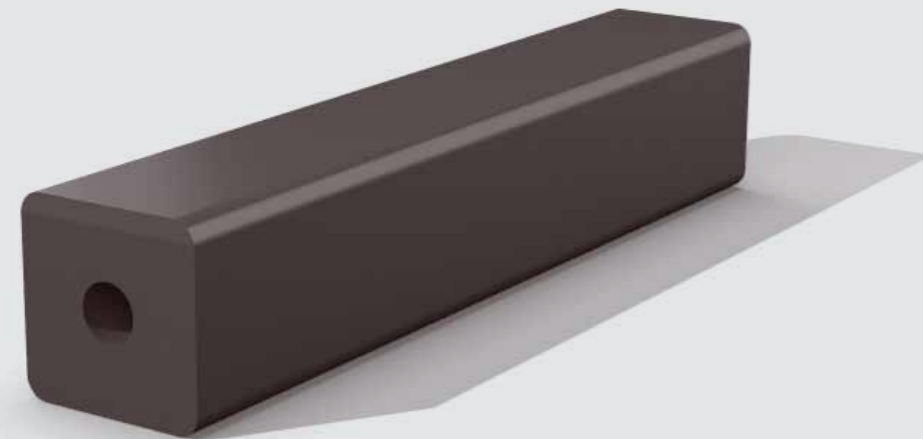
be produced vulcanised in a specific radius to ensure that it fits properly around a bow or stern of a ship. Square fenders can be provided in specified lengths and the ends can be bevelled.

Applications

As is the case with D fenders, square fenders can be used for a wide range of applications:

- workboats
- tugboats
- pilot boats
- fishing boats
- quays
- pontoons
- piers
- loading bays
- car parks





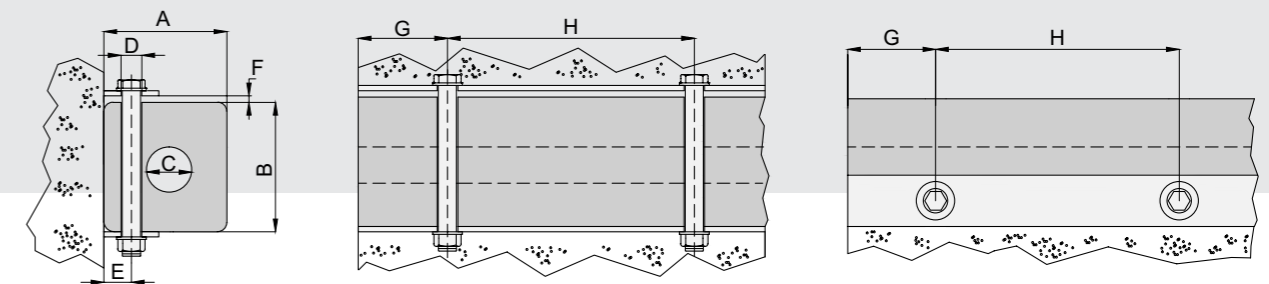
Standard dimensions

A (mm)	B (mm)	C (mm)	Weight (kg/m)
100	100	30	11.4
150	150	65	23.6
200	200	75	43.8
200	200	100	39.5
250	200	100	52.0
250	250	100	67.2
300	250	100	82.6
300	300	150	93.0
350	350	175	121
400	400	200	158
500	500	250	247

Other non-standard dimensions available on request.

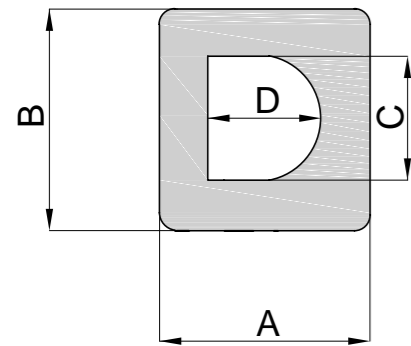
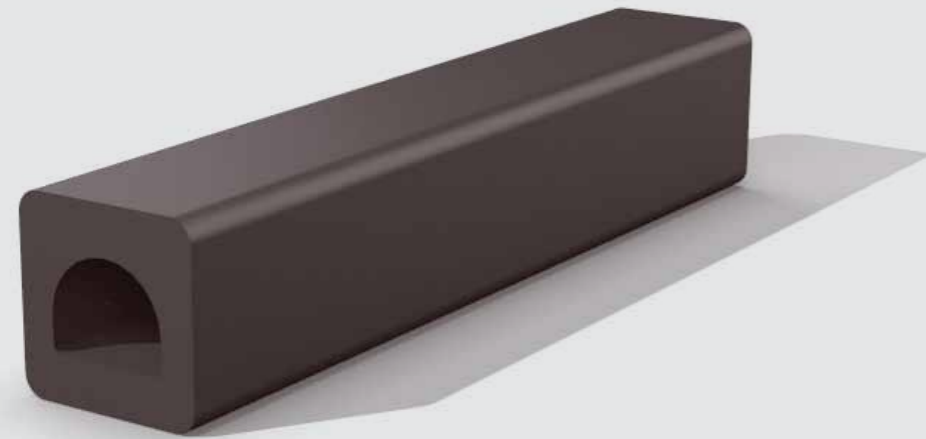


Mounting method and dimensions



A (mm)	B (mm)	C (mm)	D (mm)	E (mm)	F (mm)	G	H	Flat bar	Bolt size
100	100	30	15	25	10	90-130	200-300	50 x 6	M12
150	150	65	20	30	12	110-150	250-350	60 x 8	M16
200	200	75	25	45	15	130-180	300-400	80 x 10	M20
200	200	100	25	40	15	130-180	300-400	80 x 10	M20
250	200	100	30	45	20	140-200	350-450	90 x 10	M24
250	250	100	30	50	20	140-200	350-450	100 x 10	M24
300	250	100	30	50	25	140-200	350-450	100 x 10	M24
300	300	150	30	60	25	140-200	350-450	110 x 12	M24
350	350	175	35	65	25	140-200	350-450	120 x 12	M30
400	400	200	35	70	30	140-200	350-450	130 x 15	M30
500	500	250	45	90	40	150-230	400-500	150 x 20	M36

General guidelines for mounting. For reference purposes only.



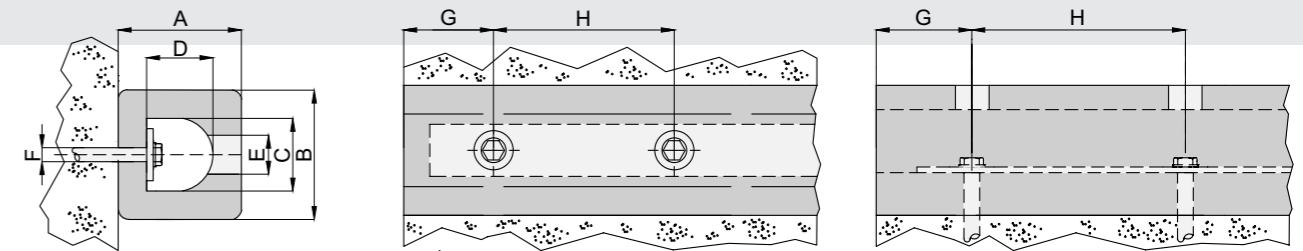
Standard dimensions

A (mm)	B (mm)	C (mm)	D (mm)	Weight (kg/m)
100	100	50	45	9.9
150	150	70	65	22.7
200	150	90	65	30.8
200	200	90	95	39.8
250	200	120	95	49.4
250	250	120	120	61.1
300	250	140	115	75.0
300	300	125	135	92.0
400	400	200	200	153
500	500	250	250	239

Other non-standard dimensions available on request.

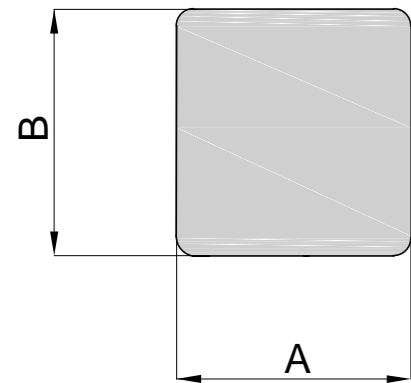
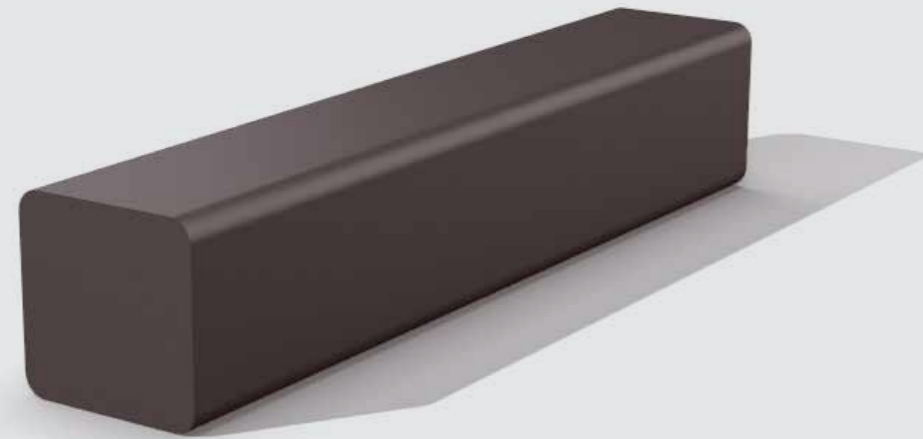


Mounting method and dimensions



A (mm)	B (mm)	C (mm)	D (mm)	E (mm)	F (mm)	G	H	I (mm)	J (mm)	Flat bar	Bolt size
100	100	50	45	30	15	90-130	200-300	25	10	40 x 5	M12
150	150	70	65	40	20	110-150	250-300	30	12	50 x 8	M16
200	150	90	65	50	25	130-180	300-400	45	15	70 x 10	M20
200	200	90	95	50	25	130-180	300-400	40	15	70 x 10	M20
250	200	120	95	60	30	140-200	350-450	45	20	90 x 12	M24
250	250	120	120	60	30	140-200	350-450	50	20	90 x 12	M24
300	250	140	115	60	30	140-200	350-450	50	25	100 x 12	M24
300	300	125	135	60	30	140-200	350-450	60	25	100 x 12	M24
400	400	200	200	75	35	140-200	350-450	70	30	150 x 15	M30
500	500	250	250	90	45	160-230	400-500	90	40	180 x 20	M36

General guidelines for mounting. For reference purposes only.



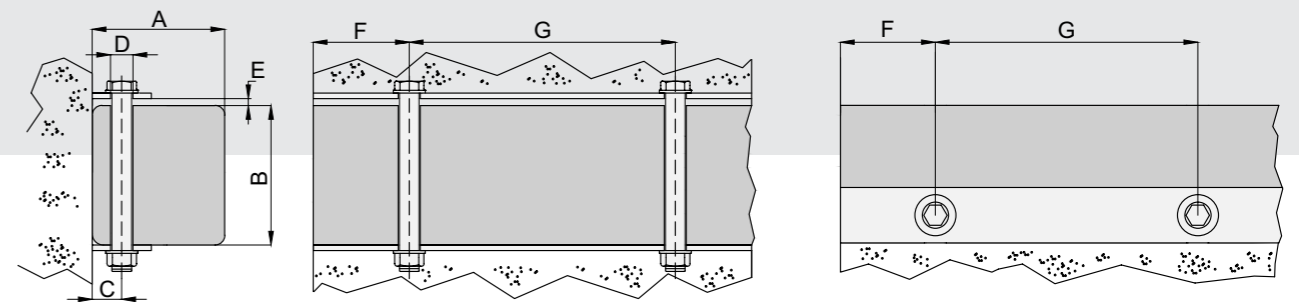
Standard dimensions

A (mm)	B (mm)	Weight (kg/m)
100	100	12
150	150	27
200	200	48
250	250	75
300	300	108
350	350	147
400	400	192

Other non-standard dimensions available on request.



Mounting method and dimensions



A (mm)	B (mm)	C (mm)	D (mm)	E (mm)	F	G	Flat bar	Bolt size
100	100	25	15	10	90-130	200-300	50 x 6	M12
150	150	30	20	12	110-150	250-350	60 x 8	M16
200	200	40	25	15	130-180	300-400	80 x 10	M20
250	250	50	30	20	140-200	350-450	100 x 10	M24
300	300	60	30	25	140-200	350-450	110 x 12	M24
350	350	65	35	25	140-200	350-450	120 x 12	M30
400	400	70	35	30	140-200	350-450	130 x 15	M30

General guidelines for mounting. For reference purposes only.

Your local representative:

