



Composite fenders

COMPOSITE FENDERS



Composite fenders consist of a rubber profile with a wear resistant UHMW-PE coating with a low coefficient of friction. The two materials are connected to each other by means of vulcanisation to form a permanent connection. The rubber profile absorbs energy while the UHMW-PE coating provides low friction and appropriate sliding properties. Composite fenders are suitable for the protection of various types of ships and quays, especially where a bumper is required with a wear-resistant surface with low friction properties.

Types

FenderTec produces a standard range of composite fenders in block, keyhole and trapezoidal form. The most common dimensions are kept in stock and can therefore be delivered at short notice. Non-standard sizes and customer specific versions can also be produced and delivered with short lead times.

Processing

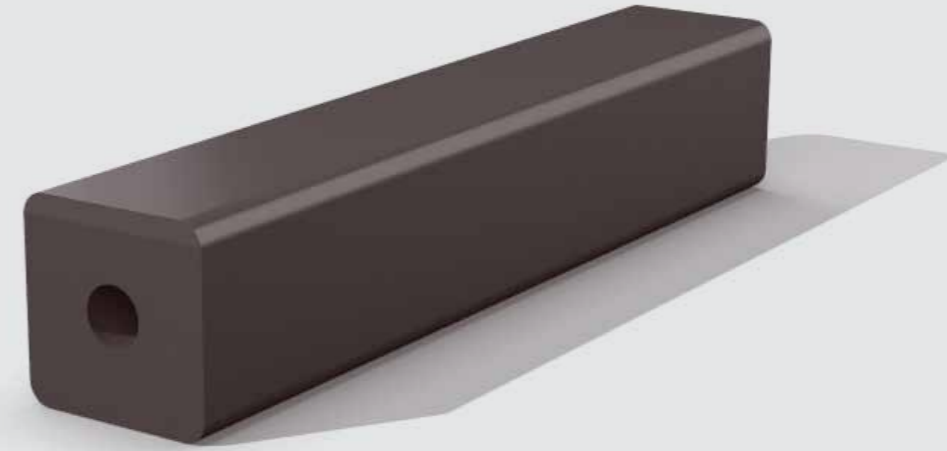
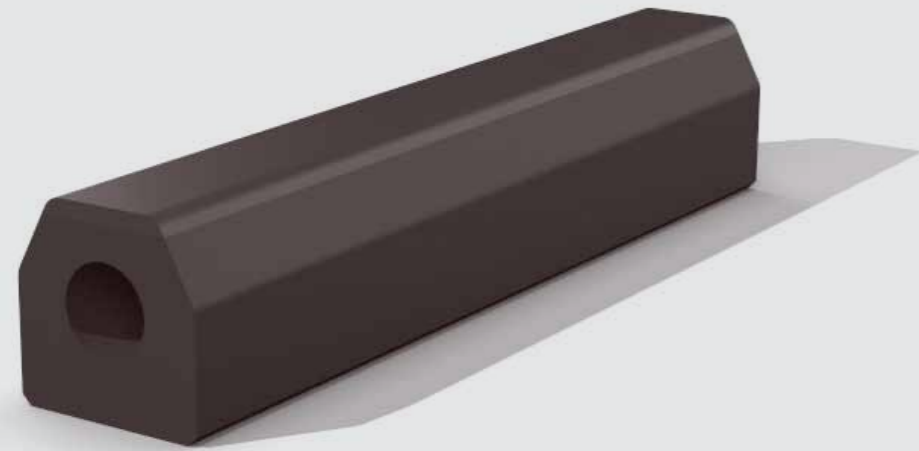
Composite fenders are normally mounted between two strips or in a U-beam. The required mounting holes are made through the side of the fender. Composite fenders can be supplied in any desired length and the ends can be bevelled.

Applications

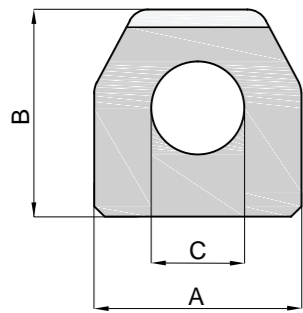
Composite fenders are widely used in various sizes and designs on:

- workboats
- barges
- tugboats
- pontoons
- water locks
- ports
- quays
- piers





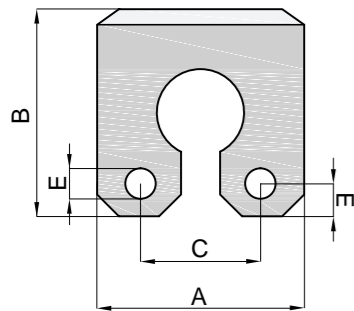
Standard dimensions Trapezium



A (mm)	B (mm)	C (mm)	Weight (kg/m)
80	80	42	5.4
100	100	45	8.4
120	120	62	12.2
150	150	73	19.7

Other non-standard dimensions available on request.

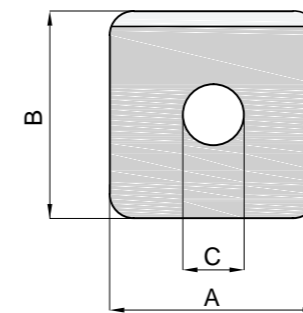
Standard dimensions Keyhole



A (mm)	B (mm)	C (mm)	D (mm)	E (mm)	Weight (kg/m)
200	200	130	28	35	30
250	250	150	33	50	49
300	300	180	33	60	76
350	350	210	33	70	109

Other non-standard dimensions available on request.

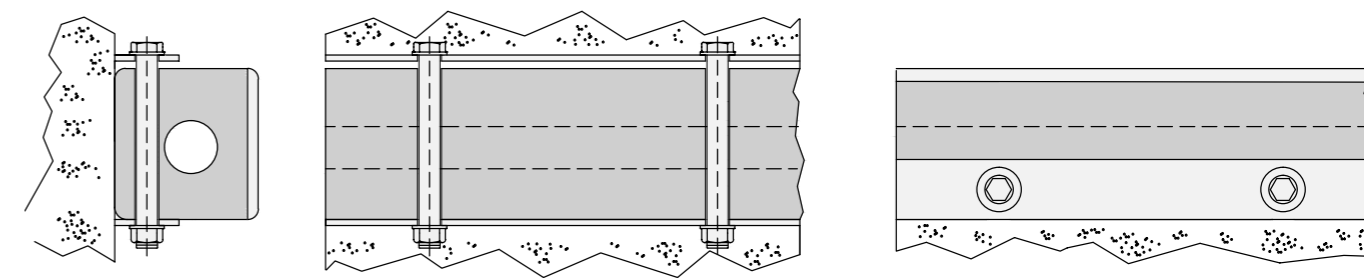
Standard dimensions Block



A (mm)	B (mm)	C (mm)	Weight (kg/m)
100	100	30	10.3
150	150	65	21.5
165	125	65	19.2
200	200	75	40.2
200	200	100	36.2
250	250	100	60.2
300	300	125	92.1

Other non-standard dimensions available on request.

Mounting method



General guidelines for mounting. For reference purposes only.



Your local representative:

